



/// PRODUCT CATALOG

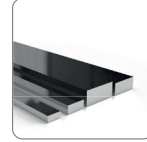
HOT WORK TOOL STEEL

444 20 50 /// yuksele.com

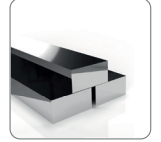
ROUND



FLAT



BLOCK



Hot Work Tool Steel

X44 ESR

Chose Of Material World

Favorite of Aluminum

Meet X44 ESR.Mod, the most selling product of 1.2344 grade, which is the most important input of the aluminum industry in our country.

X44 ESR is Swiss patented material which is by far market leader among the products sold in our country, especially aliminum extrusion.

It is increased performance & productivity more than 8 times of conventional products by modified compositionn and production process.



Shapes & Sizes



Rounds

Forged 160 - 800 mm

Chemical Composition

X44 ESR	DIN			Standart				Teslimat Sertliđi	Isıl İşlem Sonrası
	-			DIN 17350				max. 229 HB	51 - 54 HRc
	C	Si	Mn	P	S	Cr	Mo	V	Darbe Dayanımı
min	0,37	0,90	0,30	Mod	Mod	4,80	1,20	0,90	200-300 Joule
max	0,43	1,20	0,5	Mod	Mod	5,50	1,50	1,10	

Forging Ratio : min. 8 : 1 Grain Size : min. 8



Hot Work Tool Steel

DSS 44 EFS

Choice Of Material World

DSS 44 EFS is specially developed for aluminum sector by DSS which has been producing Tool Steels since 1932 and market leader in continental europe

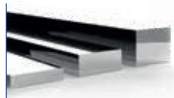


Shapes & Sizes



Rounds

Rolled 20 - 180 mm
Forged 190 - 400 mm



Flats

Flat 20 - 400 x 80 - 400 mm

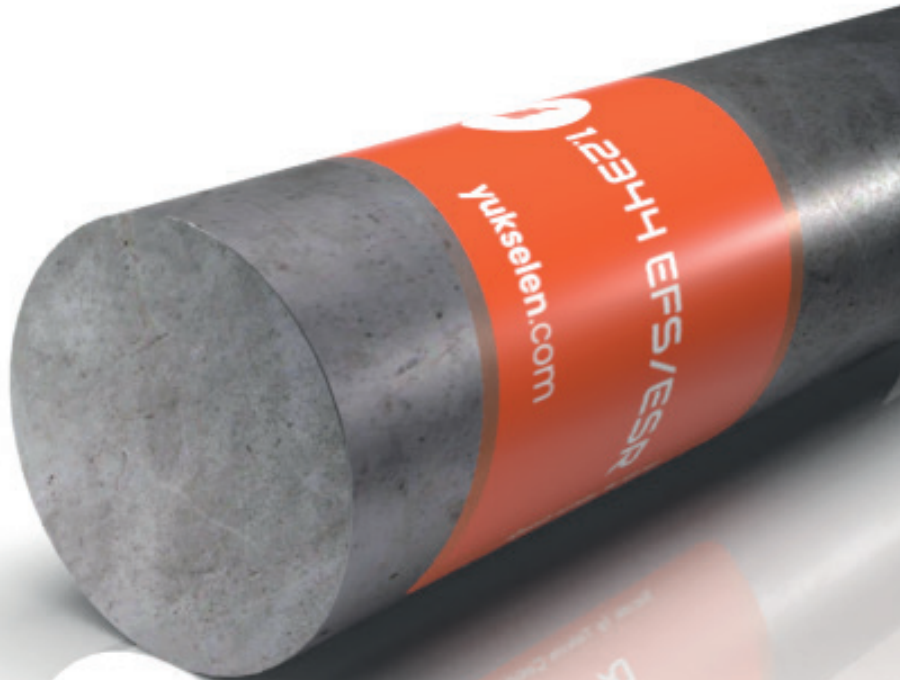
Kimyasal Kompozisyon

1.2344 EFS	DIN		Standart			Teslimat Sertliđi			Isıl İşlem Sonrası
	X40CrMoV51		DIN 17350			max. 229 HB			51 - 54 HRc
	C	Si	Mn	P	S	Cr	Mo	V	Darbe Dayanımı
min	0,37	0,90	0,30	0,00	0,00	4,80	1,20	0,90	200 - 300 Joule
max	0,43	1,20	0,50	0,03	0,08	5,50	1,50	1,10	



Hot Work Tool Steel

1.2344 EFS/ESR

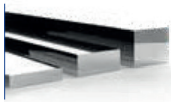


Shapes & Sizes



Rounds

Rolled 10 - 180 mm
Forged 100 - 600 mm



Flats

Square 80 - 400 mm
Flat 20 - 400 x 100 - 610 mm
Block 200 - 1,000 x 500 - 2,000 mm

Chemical Composition

1.2344 EFS/ESR	DIN		Standart			Teslimat Sertliđi			Isil İřlem Sonrası
	X40CrMoV5 1		DIN 17350			max. 229 HB			51 - 54 HRc
	C	Si	Mn	P	S	Cr	Mo	V	
min	0,37	0,90	0,30	0,00	0,00	4,80	1,20	0,90	
max	0,43	1,20	0,50	0,03	0,03	5,50	1,50	1,10	



Hot Work Tool Steel

STRONQ14

Choice Of Material World

Stronq14 has important place mainly forging and other manufacturing industries, which present higher performance than 1.2714 HH Mod with higher and homogeneous hardness, excellent microstructure and standard.

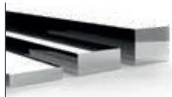


Shapes & Sizes



Rounds

Forged 160 - 600 mm



Flats

Square 200 - 800 mm
Block 200 - 800 x 350 - 1,000 mm

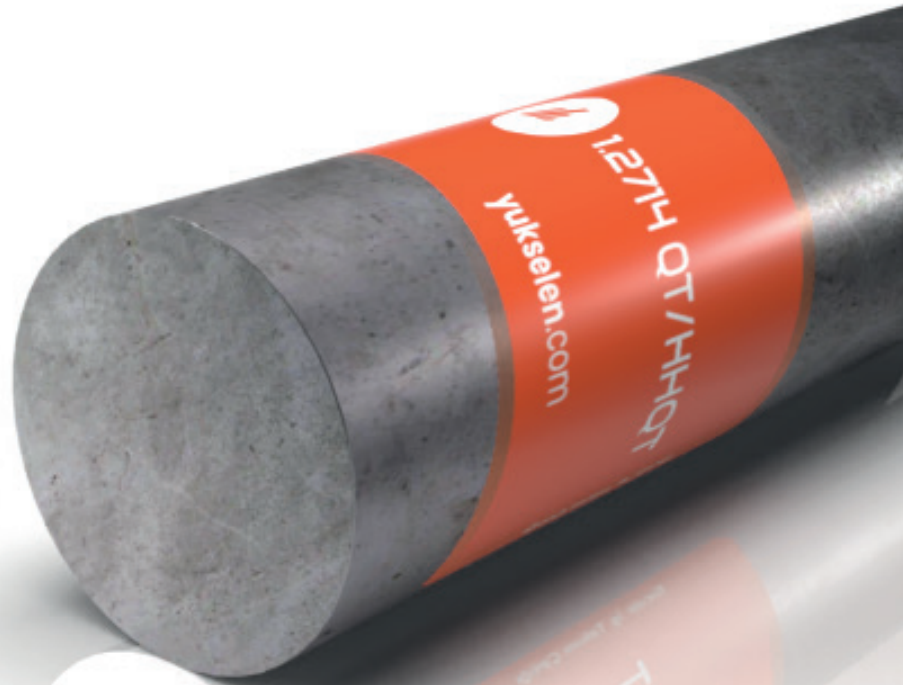
Chemical Composition

STRONQ 14	Standart		Teslimat Sertliđi							
	DIN 17350		42 - 45 HRC							
	C	Si	Mn	P	S	Cr	Mo	V	Ni	
min	0,50	0,10	0,65	0,00	0,00	1,00	0,45	0,07	1,50	
max	0,60	0,40	0,95	0,015	0,005	1,20	0,55	0,12	1,80	



Hot Work Tool Steel

1.2714 QT/HH QT

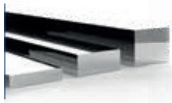


Shapes & Sizes



Rounds

Forged 160 - 600 mm



Flats

Square 200 - 800 mm
Block 200 - 800 x 350 - 1,000 mm

Chemical Composition

1.2714 QT	DIN			Standart			Teslimat Sertliđi			Isıl İşlem Sonrası
		56NiCrMoV7			DIN 17350			max. 248 HB		
	C	Si	Mn	P	S	Cr	Mo	V	Ni	1.2714 QT
min	0,50	0,10	0,65	0,00	0,00	1,00	0,40	0,07	1,50	Teslimat Sertliđi
max	0,60	0,40	0,95	0,03	0,03	1,20	0,55	0,12	1,80	40 - 44 HRc

1.2714 HH QT	DIN			Standart			Teslimat Sertliđi			Isıl İşlem Sonrası
		56NiCrMoV7			DIN 17350			max. 248 HB		
	C	Si	Mn	P	S	Cr	Mo	V	Ni	1.2714 QT
min	0,50	0,10	0,65	0,00	0,00	1,00	0,40	0,07	1,50	Teslimat Sertliđi
max	0,60	0,40	0,95	0,03	0,03	1,20	0,55	0,12	1,80	44 - 48 HRc

HH : High Hard



Hot Work Tool Steel

1.2714 Annealed



Shapes & Sizes



Rounds

Forged 160 - 800 mm

1.2714 A	DIN			Standart				Teslimat Sertliđi		Isıl İşlem Sonrası
	56NiCrMoV7			DIN 17350				max. 248 HB		44 - 58 HRc
	C	Si	Mn	P	S	Cr	Mo	V	Ni	1.2714 QT
min	0,50	0,10	0,65	0,00	0,00	1,00	0,40	0,07	1,50	Teslimat Sertliđi
max	0,60	0,40	0,95	0,03	0,03	1,20	0,55	0,12	1,80	40 - 44 HRc

Hot Work Tool Steel

Other Hot Work Tool Steel

 2343

 2363

 2365

Chemical Composition

1.2343	DIN		Standart			Teslimat Sertliği			Isıl İşlem Sonrası
	X38CrMoV5 1		DIN 17350			max. 229 HB			50 - 53 HRc
	C	Si	Mn	P	S	Cr	Mo	V	
min	0,36	0,90	0,30	0,00	0,00	4,80	1,10	0,25	
max	0,42	1,20	0,50	0,03	0,03	5,50	1,40	0,50	

1.2363	DIN		Standart			Teslimat Sertliği			Isıl İşlem Sonrası
	X100CrMoV5-1		GOST 95X5ГМ			max. 230 HB			62 - 64 HRc
	C	Si	Mn	P	S	Cr	Mo	V	Ni
min	0,90	0,20	0,40	0,00	0,00	4,80	0,90	0,10	-
max	1,05	0,40	0,70	0,035	0,035	5,50	1,20	0,30	-

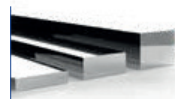
1.2365	DIN		Standart			Teslimat Sertliği			Isıl İşlem Sonrası
	X32CrMoV3 - 3		DIN 17350			max. 229 HB			47 - 51 HRc
	C	Si	Mn	P	S	Cr	Mo	V	Ni
min	0,28	0,10	0,15	0,00	0,00	2,70	2,60	0,40	-
max	0,35	0,40	0,45	0,03	0,03	3,20	3,00	0,70	-

Shapes & Sizes



Rounds

Rolled 10 - 340 mm
Forged 200 - 1,200 mm



Flats

Square 20 - 1,000 mm
Flat 20 - 400 x 100 - 610 mm
Block 200 - 1,000 x 500 - 2,000 mm

Hot Work Tool Steel



Other Hot Work Tool Steel

 2367


2714
ISO B MOD

Chemical Composition

1.2367	DIN		Standart			Teslimat Sertliđi			Isıl İşlem Sonrası
	X38CrMoV5-3		GOST 45X5M3Φ			max. 235 HB			47 - 53 HRC
	C	Si	Mn	P	S	Cr	Mo	V	Ni
min	0,35	0,30	0,30	0,00	0,00	4,70	2,70	0,40	-
max	0,40	0,50	0,60	0,035	0,035	5,20	3,30	0,70	-

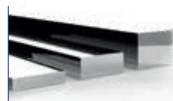
1.2714	DIN		Standart			Teslimat Sertliđi			Isıl İşlem Sonrası
	-		DIN 17350			38 - 46 HRC			-
ISO B MOD	C	Si	Mn	P	S	Cr	Mo	V	Ni
min	0,50	0,10	0,80	0,00	0,00	0,90	0,65	0,07	1,80
max	0,60	0,40	1,05	0,03	0,035	1,20	0,85	0,12	2,20
hedef	0,55	0,25	0,95	0,015	0,005	1,10	0,75	0,10	2,00

Shapes & Sizes



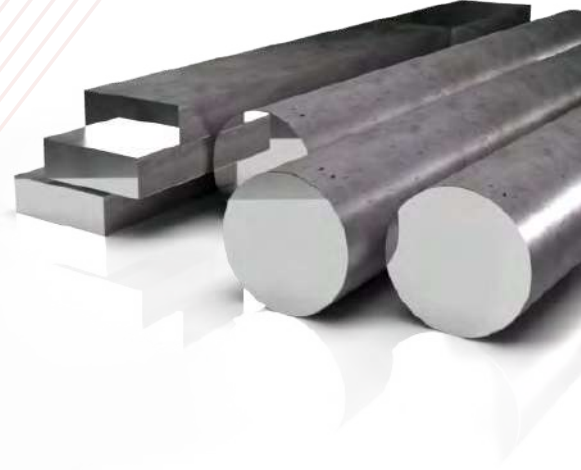
Rounds

Rolled 10 - 340 mm
Forged 200 - 800 mm



Flats

Square 20 - 1,000 mm
Flat 20 - 400 x 100 - 610 mm
Block 200 - 1,000 x 500 - 2,000 mm



YÜKSELEN

444 20 50 // yuksele.com

MERKEZ (ESENYURT) //

Osmangazi Mahallesi
2647. Sokak No: 40/1
34538 Esenyurt, İstanbul
T: 444 20 50

DUDULLU ŞUBESİ //

Dudullu OSB, DES San. Sit.
1. Cd. Tic. Merkezi No: 3/37
34775 Ümraniye, İstanbul
T: (216) 593 32 32

İZMİR (EGE) ŞUBESİ //

Atatürk Org. San. Bölğ.
10022. Sk. No: 18
35580 Çiğli, İzmir
T: (232) 600 03 03

YÖNETİM (ATAKÖY ŞUBESİ) //

Ataköy Towers A Blok Kat 10
No: 142 Ataköy E-5 Yanyol
34158 Bakırköy, İstanbul
T: (212) 661 89 89

DİLOVASI ŞUBESİ //

Kocaeli Kobi OSB
Köseler Mah. 4. Cd. No: 19
41455 Dilovası, Kocaeli
T: 444 20 50

EXPORT OFFICE //

Avrupa Konutları A-Ofis Kat 6
No: 23 Ataköy E-5 Yanyol
34158 Bakırköy, İstanbul
T: (212) 661 11 57