



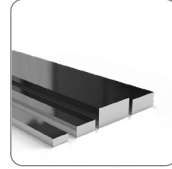
/// PRODUCT CATALOG

Alloy Steel

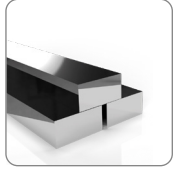
ROUND



FLAT



BLOCK



444 20 50 /// yuksele.com



Alloy Steel

4140

SAE 4140 / DIN 42CrMo4

Favorite of Heat Treated Alloy Steel

It is the most widely used Heat Treated Alloy Steel in our country.
It is always available in the stoces of Yukselen 20-340 mm as rolled and 270-1.500 mm as forged.

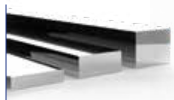


Shapes & Sizes



Rounds

Rolled 20 - 340 mm
Forged 270 - 1,500 mm



Flats

Square 20 - 1,000 mm
Flat 20 - 400 x 100 - 610 mm
Block 200 - 1,000 x 500 - 2,000 mm

Chemical Composition

SAE 4140		C	Si	Mn	P	S	Cr	Cu	Mo	Ni
	min	0,38	0,15	0,75	0,00	0,00	0,80	0,00	0,15	0,00
	max	0,43	0,35	1,00	0,030	0,040	1,10	0,35	0,25	0,25
4140 QT						Teslimat Sertliđi		28 - 32 HRc		

DIN 42CrMo4		C	Si	Mn	P	S	Cr	Cu	Mo	Ni
	min	0,38	0,00	0,60	0,00	0,00	0,90	-	0,15	-
	max	0,45	0,40	0,90	0,035	0,035	1,20	-	0,30	-
42CrMo4 QT						Teslimat Sertliđi		28 - 32 HRc		



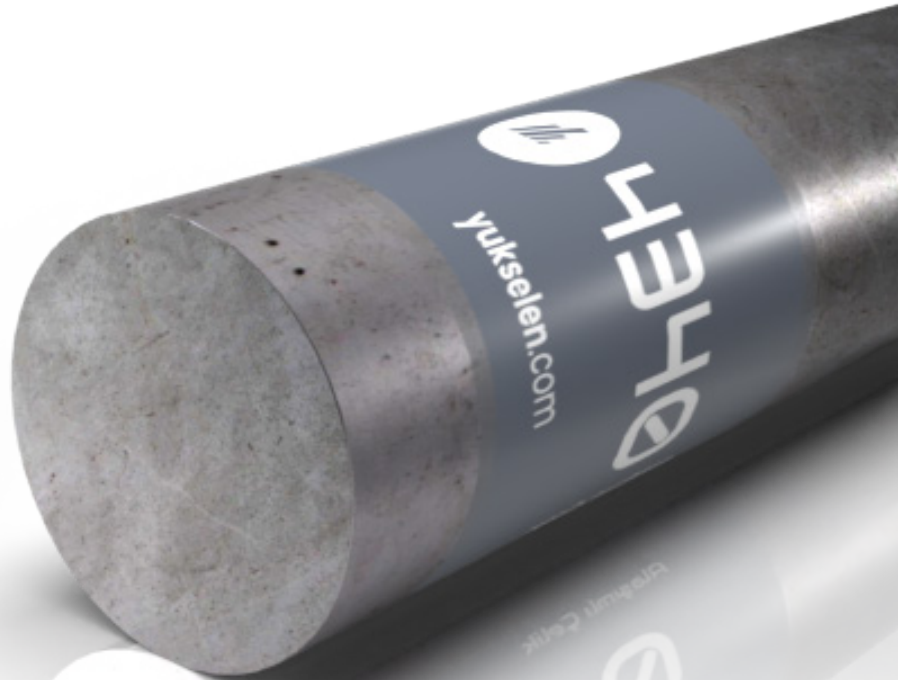
Alloy Steel

4340

SAE 4340 / DIN 34CrNiMo6

Performance Steel

It is the top material which has the highest performance among Heat Treated Alloy Steel.
Can be delivered as heat treated (as QT)

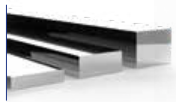


Shapes & Sizes



Rounds

Rolled 10 - 340 mm
Forged 200 - 1,000 mm



Flats

Square 20 - 1,000 mm
Flat 20 - 400 x 100 - 610 mm
Block 200 - 1,000 x 500 - 2,000 mm

Chemical Composition

SAE 4340		C	Si	Mn	P	S	Cr	Cu	Mo	Ni
	min	0,38	0,15	0,60	0,00	0,00	0,70	0,00	0,20	1,65
	max	0,43	0,35	0,80	0,030	0,040	0,90	0,35	0,30	2,00

DIN 34CrNiMo6		C	Si	Mn	P	S	Cr	Cu	Mo	Ni
	min	0,30	0,00	0,50	0,00	0,00	1,30	-	0,15	1,30
	max	0,38	0,40	0,80	0,035	0,035	1,70	-	0,30	1,70



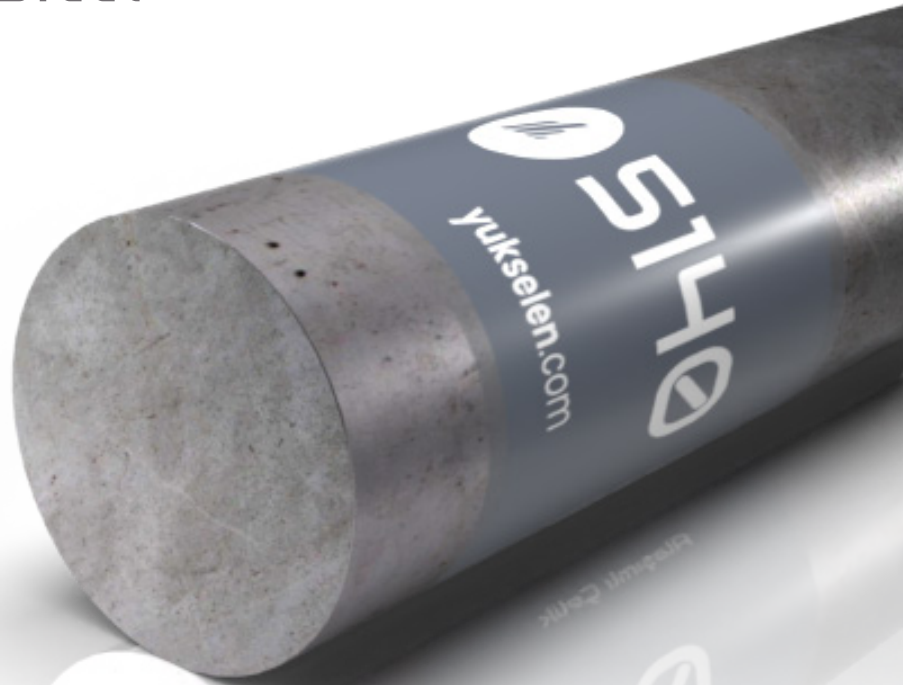
Alloy Steel

5140

SAE 5140 / DIN 41Cr4

Heat Treated Alloy Steel

It is one of the most used steel grade by industries in our country

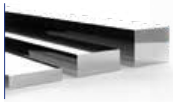


Shapes & Sizes



Rounds

Rolled	10 - 340 mm
Forged	200 - 1,200 mm



Flats

Square	20 - 1,000 mm
Flat	20 - 400 x 100 - 610 mm
Block	200 - 1,000 x 500 - 2,000 mm

Chemical Composition

SAE 5140		C	Si	Mn	P	S	Cr	Cu	Mo	Ni
	min	0,38	0,15	0,70	0,00	0,00	0,70	0,00	0,00	0,00
	max	0,43	0,35	0,90	0,030	0,040	0,90	0,35	0,06	0,25

DIN 41Cr4		C	Si	Mn	P	S	Cr	Cu	Mo	Ni
	min	0,38	0,00	0,60	0,00	0,00	0,90	-	-	-
	max	0,45	0,40	0,90	0,035	0,035	1,20	-	-	-



Alloy Steel

8620

SAE 8620 / DIN 21NiCrMo2

Favorite of Reduction Industry

It is widely used by Reduction gear and similar manufacturing industries. Yukselen always keep stock of this material with the size range 20-600 mm

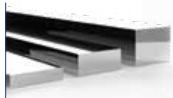


Shapes & Sizes



Rounds

Rolled 10 - 340 mm
Forged 200 - 1,200 mm



Flats

Square 20 - 1000 mm
Flat 20 - 400 x 100 - 610 mm
Block 200 - 1,000 x 500 - 2,000 mm

Chemical Composition

SAE 8620		C	Si	Mn	P	S	Cr	Cu	Mo	Ni
	min	0,18	0,15	0,70	0,00	0,00	0,40	0,00	0,15	0,40
	max	0,23	0,35	0,90	0,030	0,040	0,60	0,35	0,25	0,70

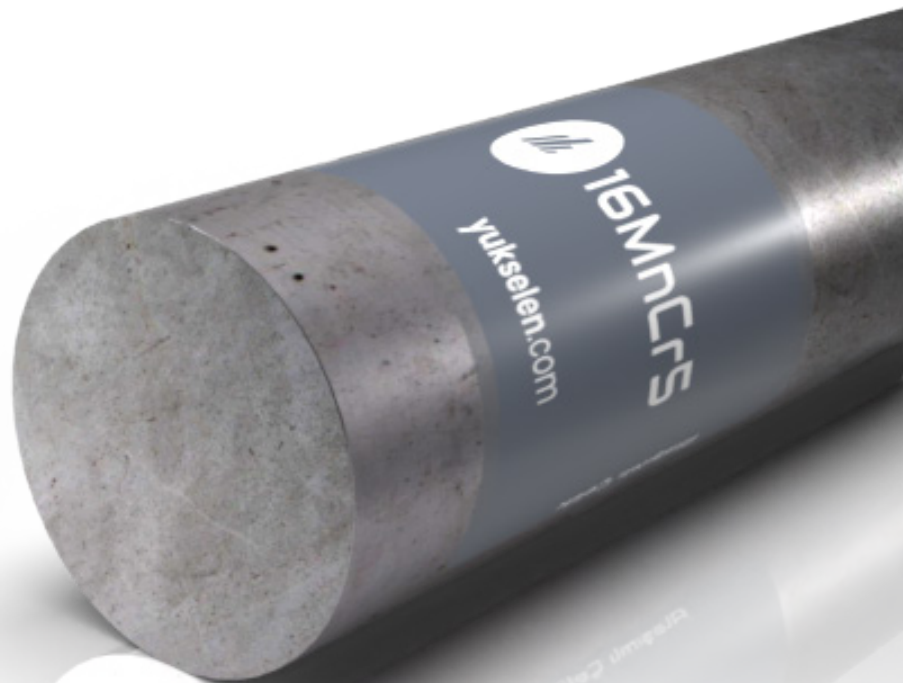
DIN 21NiCrMo2		C	Si	Mn	P	S	Cr	Cu	Mo	Ni
	min	0,17	0,00	0,65	0,00	0,00	0,35	-	0,15	0,40
	max	0,23	0,40	0,95	0,035	0,035	0,70	-	0,25	0,70



Alloy Steel

16MnCr5

DIN 16mnCr5

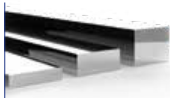


Shapes & Sizes



Rounds

Rolled 10 - 340 mm
Forged 200 - 1,200 mm



Flats

Square 20 - 1000 mm
Flat 20 - 400 x 100 - 610 mm
Block 200 - 1000 x 500 - 2,000 mm

Chemical Composition

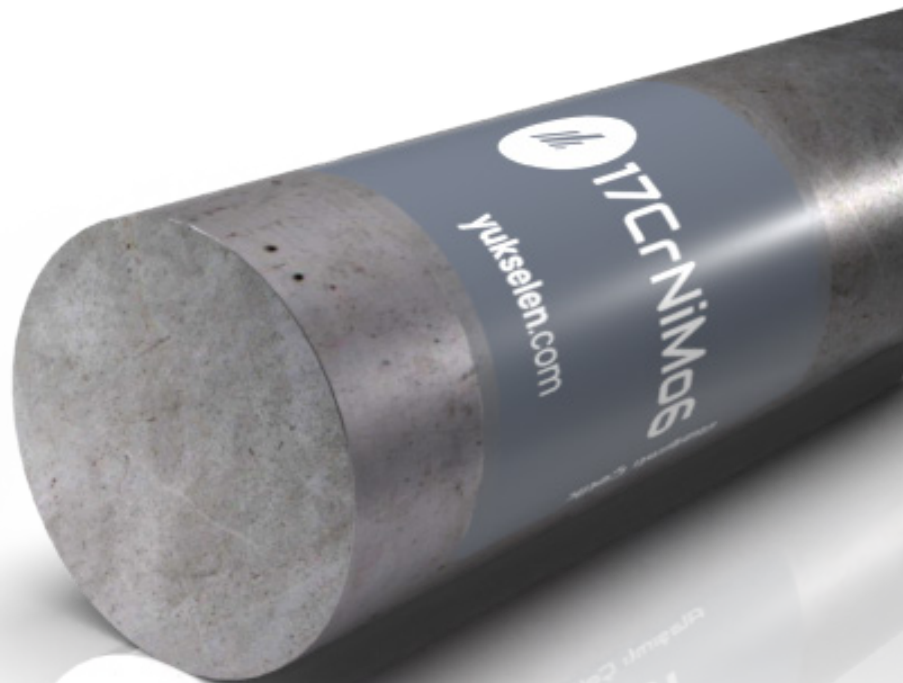
DIN 16MnCr5		C	Si	Mn	P	S	Cr	Mo	Ni
	min	0,14	0,00	1,00	0,00	0,00	0,80	-	-
max	0,19	0,40	1,30	0,035	0,035	1,10	-	-	

YÜKSELEN



Alloy Steel

17CrNiMo6 DIN 17CrNiMo6

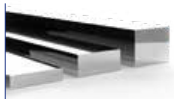


Shapes & Sizes



Rounds

Rolled	10 - 340 mm
Forged	200 - 1,200 mm



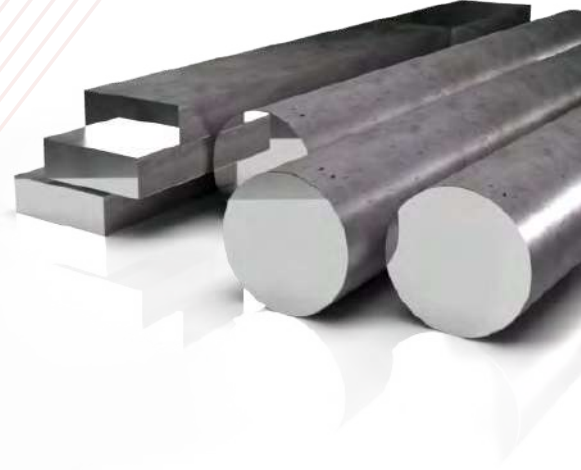
Flats

Square	20 - 1000 mm
Flat	20 - 400 x 100 - 610 mm
Block	200 - 1000 x 500 - 2,000 mm

Chemical Composition

DIN 16MnCr5		C	Si	Mn	P	S	Cr	Mo	Ni
	min	0,14	0,00	1,00	0,00	0,00	0,80	-	-
	max	0,19	0,40	1,30	0,035	0,035	1,10	-	-





YÜKSELEN

444 20 50 // yukselen.com

MERKEZ (ESENYURT) //

Osmangazi Mahallesi
2647. Sokak No: 40/1
34538 Esenyurt, İstanbul
T: 444 20 50

DUDULLU ŞUBESİ //

Dudullu OSB, DES San. Sit.
1. Cd. Tic. Merkezi No: 3/37
34775 Ümraniye, İstanbul
T: (216) 593 32 32

İZMİR (EGE) ŞUBESİ //

Atatürk Org. San. Bölğ.
10022. Sk. No: 18
35580 Çiğli, İzmir
T: (232) 600 03 03

YÖNETİM (ATAKÖY ŞUBESİ) //

Ataköy Towers A Blok Kat 10
No: 142 Ataköy E-5 Yanyol
34158 Bakırköy, İstanbul
T: (212) 661 89 89

DİLOVASI ŞUBESİ //

Kocaeli Kobi OSB
Köseler Mah. 4. Cd. No: 19
41455 Dilovası, Kocaeli
T: 444 20 50

EXPORT OFFICE //

Avrupa Konutları A-Ofis Kat 6
No: 23 Ataköy E-5 Yanyol
34158 Bakırköy, İstanbul
T: (212) 661 11 57